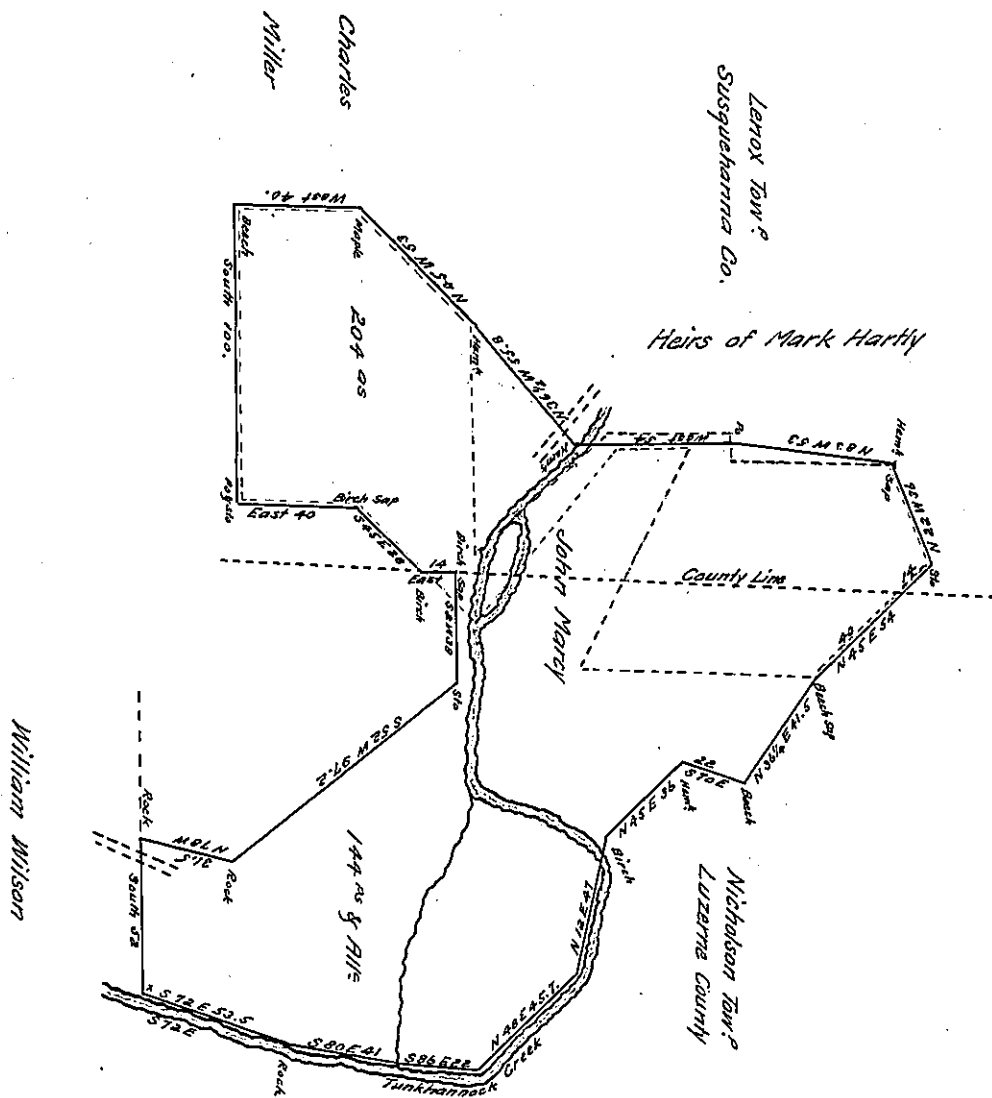


ALSO
B-16-174



Draft of a tract of Land Situate on both sides of Tunkhannock Creek and partly in the Township of Nicholson Luzerne County and partly in the Township of Lenox Susquehanna County upon which John Marcy has an actual settlement and improvement adjoining lands of the Heirs of Mark Hartley and others. Containing Two Hundred and Four acres and one hundred & forty four perches, with the usual allowance of six per cent. &c. Surveyed the above described tract of Land the Thirtieth day of July A^o Dⁱ 1832 for John Marcy, by Virtue of his Warrant dated the Ninth day of July A^o Dⁱ 1832

To Jacob Spangler Esq^r
Surveyor General.

Henry Colt D.S.
For Luzerne Co.
J. W. Chapman D.S.
For Susquehanna Co.

Note: The dotted lines ^{in red} represents the Location of a warrant to Andrew Gordinier made the 25th April 1832 on his warrant dated 16th April 1832

H.C. D.S.

IN TESTIMONY that the above is a copy of the original remaining on file in the Department of Internal Affairs of Pennsylvania, made conformably to an Act of Assembly approved the 16th day of February, 1833, I have hereunto set my Hand and caused the Seal of said Department to be affixed at Harrisburg, this

Seventh day of October 1902.

Henry Horvath
Secretary of Internal Affairs.